

XEROX®

Technology | Document Management | Consulting Services

Xerox Nuvera® 100/120/144 EA
Digital Production System

Overview

Xerox Nuvera® EA Digital Production System

Put Your Best Image Forward



An Image That Says “Success.”

Putting your best image forward is about giving your customers something so exceptional, they come back again and again. It's about delivering your best at each and every turn. And it's easier than you imagined with the extraordinary monochrome imaging quality of the Xerox Nuvera® EA Digital Production System.

Revolutionary EA fine particle toner enables page after page of polished impressions that are comparable to, or exceed, offset-level output for all of your applications. You'll see the difference in the clear, fine lines, razor sharp text, bold solids and clean halftone photos—image quality so stunning, it will take you by surprise. You'll feel the difference as well, in the distinctive sophistication of every sheet's smooth, matte finish. You'll know the difference and, most importantly, so will your customers.

Revolutionary
EA Toner

High Resolution, High Expectations Met.

You can expect more from this system. It delivers down to the last dot and line, rivaling offset point by point. Since the industry quantifies great imaging in dots per inch (dpi) and lines per inch (lpi), it's important to know the Nuvera EA Digital Production System has the numbers to support the results you'll see. Not only does it RIP at an impressive 1200 x 1200 dpi, it also delivers 4800 x 600 dpi printing, with halftone screens available at 85, 106, 125, 134 and an unprecedented 156 lpi. These quality facts translate into remarkable printed pages through silky grays, pictures that say, “this is for real” and heightened clarity and detail in every line and letter.

Plus, Xerox's Cyclone Cleaning Technology automatically removes stray toner and particles, creating the pristine environment

needed for such stellar prints on a consistent and reliable basis. The Nuvera EA Digital Production System takes you higher in these ways and more, not the least of which is a higher return on your investment.

Where Speed, Power and Versatility Come Together.

Fast-moving is a good way to describe the Nuvera EA Digital Production System, with speeds up to 144 pages per minute (ppm). Powerful is another apt adjective, thanks to the Xerox FreeFlow® DocuSP® Controller software.

With that power comes versatility. The Nuvera EA Digital Production System accepts many common data streams in their native language, so what you expect is what you get, no data transformation required. It also has broad media latitude so you can choose



from an enormous selection of substrates to create exactly the applications you envision. What's more, you have options, and plenty of them...

Scalable, Flexible, Customizable: It's Made to Fit Your Business!

You never have to settle for some of the features you need some of the time, or sacrifice a feature you'd like for the one you need, with this system. We'll help you put together a customized version to meet the needs of your business today.

Spanning the production space, we offer you a scalable menu of choices from one end of the spectrum to the other. Each system begins with a standard Nuvera EA Digital Production System print engine. From there, you can build your own solution, selecting from a host of hardware and software options including:

Speed

- Up to 100, 120 or 144 ppm

Hardware

- Scanning, integrated onboard or remote freestanding
- Various sheet feed modules, which can be used independently, together or in combinations to best support your workflow
- Sheet insertion module options to insert covers and color pages within jobs, post process and in line
- Multifunction Finisher Professional, which offers mid-production finishing with capabilities like stapling, folding and booklet-making
- Multifunction Finisher Pro Plus, which offers all the benefits of the Multifunction Finisher Professional, plus three-hole punch, color and cover insertion

- Basic Finisher Modules for production in-line stapling and stacking in single or dual combinations
- Finishing Transport Module, which gives you quick, easy access to an ever-expanding list of third-party finishing alternatives

Software

Xerox FreeFlow DocuSP offers unmatched processing power supporting flexible job submission, remote workflow and advanced security control, providing optimum productivity to all configurations.

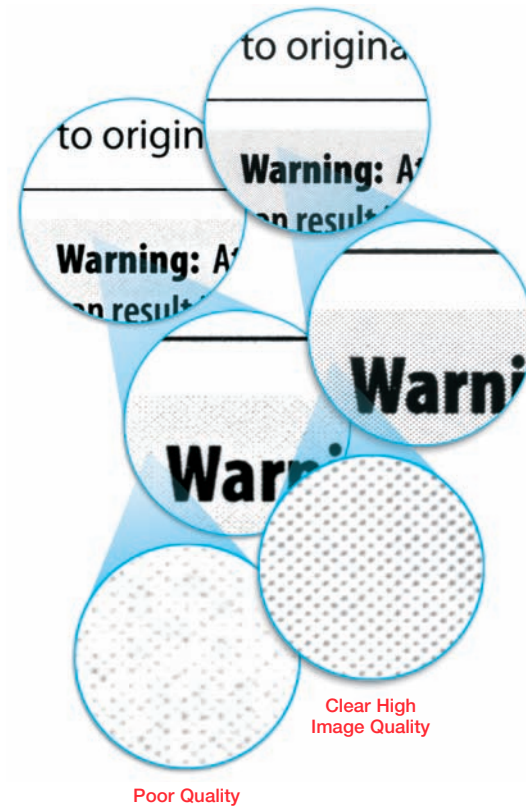
Xerox FreeFlow DocuSP standard level

- Basic workflow capabilities including one queue and simple stock handling
- Rich and familiar DocuSP capabilities including the ability to connect from various client environments, from Apple Mac® computers and PCs, plus compatibility with other DocuSP-based products

- Includes 125 lpi line screen

Xerox FreeFlow DocuSP enhanced level is achieved when you add any of the following options to standard level DocuSP, thereby creating scalable productivity to accommodate your workflow and greater connectivity to mainframe applications

- Expansive range of data streams supported in their native languages (Adobe PostScript®, PCL, PDF, TIFF, ASCII, LCDS and IPDS and variable data formats such as Xerox VIPP® and PPML), no converter or transformer required
- Productivity Pack supporting production features such as multiple queues and a robust stock library
- Image Quality Pack providing expanded line screens, up to 156 lpi



A Fabulous Image: What It Is in Black and White.

It's easy to underestimate the importance—and the beauty—of black-and-white printing. After all, from instruction manuals to books to bills and statements, it's everywhere, so we may take it for granted. There are, however, some telltale signs of a great monochrome image so you'll know it for sure when you see it:

- Image Rendition. It should appear clear, accurate and pleasing with a wide range of gray levels
- Details. Even lines, smooth curves and blends, highly detailed rendering of text in even the smallest typefaces
- Uniform Blacks. Excellent contrast is a strong indicator



This System's High IQ Is Good for Your Image

The Xerox Nuvera EA Digital Production System's outstanding image quality, or IQ, is the result of today's most progressive monochrome technology and customer-focused engineering. To thrive in an aggressive marketplace, and to successfully compete with offset, you've got to deliver a finished product with image quality that leaves the competition in the dust. Here's how we do it...

Putting the EA in the Nuvera EA Digital Production System.

As the name Nuvera EA Digital Production System implies, EA Toner plays a key role in the uncommonly high level of imaging quality this system delivers. Through this innovative process, we have built on the tradition of unrivaled image quality you've come to expect from Xerox Nuvera. Most importantly, here's what the fine particle EA Toner technology in the Nuvera EA Digital Production System does for you:

- It produces even finer lines with the highest levels of detailing, sharp text, halftones and deep solid blacks.
- Printed pages have a smooth, offset-like matte finish. Your end products will be bound to impress, saying, "elegant," "refined" and "professional" with every page.
- Fine scatter typically associated with monochrome digital printing is transparent, so even the most detailed line work is razor sharp. Images are crisp and clear.
- Greater fuser and imaging component life cycles and optimal sheet flatness enhance reliability.
- High yields mean longer production print runs are possible without operator attention or intervention to change toner/developer.
- Friendly to the environment, it achieves better distribution of smaller particles to enable enhanced quality with less toner per page.

No Need to Stop and Fill Up.

Additionally, because toner and developer are uniquely combined in a single container, you can easily replenish both without a service call. With an average yield up to 210,000 prints per cartridge, you won't need to replace them as often. Obtain maximum unattended run time adding an optional second toner container system. And when you do need to replace them, you can do so while the machine is running to maintain production, avoiding downtime.

A Clean Route to the Best Resolution.

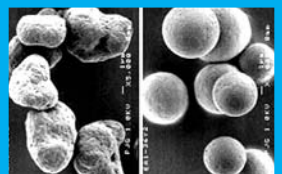
The Nuvera EA Digital Production System offers the highest monochrome resolution of any digital production printing system on the market today. You are ensured the very best image quality and performance from the start, with 1200 dpi default image quality resolution and powerful processing from the FreeFlow DocuSP Controller. Plus, Xerox's unique Cyclone Cleaning Technology automatically removes stray toner, paper dust and particles. This creates a pristine environment for consistently sharp text, images and photos.

Outstanding Registration Keeps Paper on the Right Path.

The Nuvera EA Digital Production System's noteworthy registration is enabled by Translating Electronic Registration (TELER). TELER registration precisely controls the position of each sheet of paper according to the image on the photoreceptor and the speed of each sheet traveling through the paper path to assure that it is in exactly the right position to receive the latent image. The result is superior image-to-sheet (± 0.65 mm) and front-to-back (± 0.65 mm) registration which meets or exceeds general publishing standards.

TELER_{Registration}

Regular
Toner



EA Toner—
uniform size
and shape

What Is EA Toner?

Xerox has essentially reinvented toner production by developing the Emulsion Aggregation process, the result of which is EA (Emulsion Aggregation) Toner. While the process, which creates one micron to 15 micron particles from smaller nanometer-sized particles, has many potential applications, we've applied it to toner with compelling results. This toner is actually chemically grown, rather than traditionally ground, to very small consistent particles. It requires no fuser oil and is much easier to control. Relying on a Semi Conductive Magnetic Brush (SCMB) Development System, the brush actually comes in contact with the photoreceptor to create the phenomenal images you'll see produced by the Nuvera EA Digital Production System.

Superb Line Screening Yields Elegant Halftones.

This system's unprecedented line screening—available at up to 156 lpi—produces smooth grays, more realistic pictures, increased sharpness and detail for a look that rivals magazine quality. Screens of 85, 106, 125 and 134 lpi are also available.

Media to Make Your Image Shine.

The Nuvera EA Digital Production System lets you choose from an expansive range of substrates to match your application requirements—and build your application capabilities—even oversized coated papers. You can expect consistently amazing image quality on popular coated and uncoated stocks, including bond, bristol, cover, index, offset, recycled, transparencies, carbonless, labels, tabs and preprinted forms (sizes from 8" x 10" to 12.6" x 18.5"/203 mm x 254 mm to 320 mm x 470 mm).

Impeccable Sheet Flatness in Every Environment.

Heat, humidity and curl have historically represented a host of challenges in every production print environment. They can directly impact the performance of equipment and the quality of output.

Xerox's new slim, automated Sheet Enhancement Module (SEM) takes these challenges head-on to deliver unparalleled sheet flatness. It has a broad impact on stack quality, and also clears the way to achieve the highest levels of performance from downstream finishing alternatives. In fact, in situations where external seasonal factors such as heat and humidity give rise to abnormal conditions, it allows operators to fine-tune

automated controls or use a "manual override" function to overcompensate and effect optimal sheet flatness.

With the SEM, you can produce the most aesthetically appealing documents, to maximize the Nuvera EA Digital Production System's stellar image quality and to achieve optimally smooth print runs, all fueled by impeccably flat sheets. And best of all, it works in conjunction with the stock library to automatically adjust to the specific characteristics of the paper you are running. Sheet to sheet, and job to job.

Note: The SEM is not available on configurations with the Multifunction Finisher Professional or Multifunction Finisher Pro Plus.



How Many Ways Can You Drive Your Image Home?

It's a Road with No End in Sight.

Like the open road, the Xerox Nuvera EA Digital Production System offers endless possibilities. It's so flexible, scalable and customizable, the possible combinations you can put together are too many to enumerate here; it's built by us, but definitely designed by you.



Here are just a few examples of system alternatives you might put together if you would like to...

...do time-critical printing anytime, as well as day-to-day workgroup printing and walkup copying

...print low volumes of complex documents or high volumes of simple documents

...create a workhorse system for producing promotional transactional documents

...print thousands of pieces at a time on a regular basis

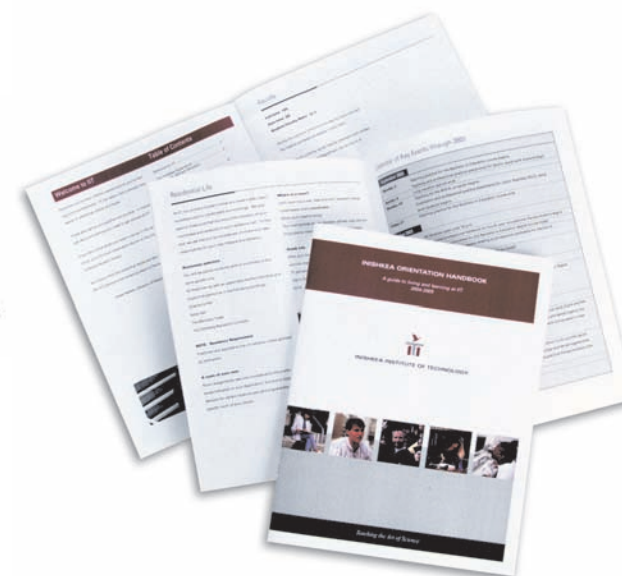
...take advantage of the fastest growing opportunity in digital printing and digital book publishing

...print high-quality books on demand in quantities as low as one, finished and ready to go

Endless



Nuvera EA Digital Production System with Full FreeFlow DocuSP, Enhanced Line Screens, Post Insertion, In-line Stacking and Stapling, Xerox DB120-D Document Binder



POSSIBILITIES

Every Piece Is in Place to **Build** Your Image

1 Scanning and Feeding

Choose the scanning option that best fits your workflow. You'll minimize operator involvement, while enhancing image quality for even the most complex documents.

Options include:

- Remote scanning via the Xerox FreeFlow Scanner 665, that delivers tremendous image quality, 65 ipm distributed scanning, 600 x 600 dpi scan resolution, high-quality graphics (1200 x 1200 dpi RIP) and photos, optimized by a push of a button to activate the Intelligent Image technology.
- A fully integrated onboard scanner that provides excellent image quality and 600 x 600 dpi. It scans at an industry-leading 120 ipm, single- or double-sided. Dual scan heads reliably scan two-sided documents in a single pass, so there's no slowdown.

When it comes to feeding, the Xerox Nuvera EA Digital Production System offers unsurpassed paper handling. Its paper trays rely on air shuttle feed technology. Processor-controlled, using information from the stock library, this technology ensures reliable feeding and supports heavier media and coated paper. Air knives separate paper to avoid misfeeds. Tiltatron technology supports production of DocuCard® applications. The system's innate intelligence tells rollers when to press harder, when the air knives should

add thrust, and more, to deliver a highly intuitive, highly productive paper-handling process sheet to sheet.

Your feeding options include:

- **Standard Sheet-feed Module.** This four-tray Sheet-feed Module has a 5,800-sheet capacity.
- **High Capacity Sheet-feed Module.** The High Capacity Sheet-feed Module has a 3,200-sheet capacity and runs applications with two oversize trays. It is an alternative for environments that want to leverage oversize stocks. This module enables you to do more high-value applications with more unattended run time, right at your point of need, and to produce high-impact jobs on demand.

***Note:** You can add up to two of the above modules in any combination to your configuration, enabling up to an 11,600 sheet capacity with as many as eight pick points.*

- **Roll Feed Solution.** A roll feed solution is available using a DocuSheeter NV communication interface kit with the standard four-tray Sheet-feed Module. This solution can provide cost savings, and also add up to five hours of continuous feed in a production print environment.

Especially important, the Nuvera EA Digital Production System allows you to reload paper without job interruption, significantly increasing continuous productivity. A roll feed solution can also be added, provided a four-tray module is part of the configuration (see your Xerox representative for local availability).

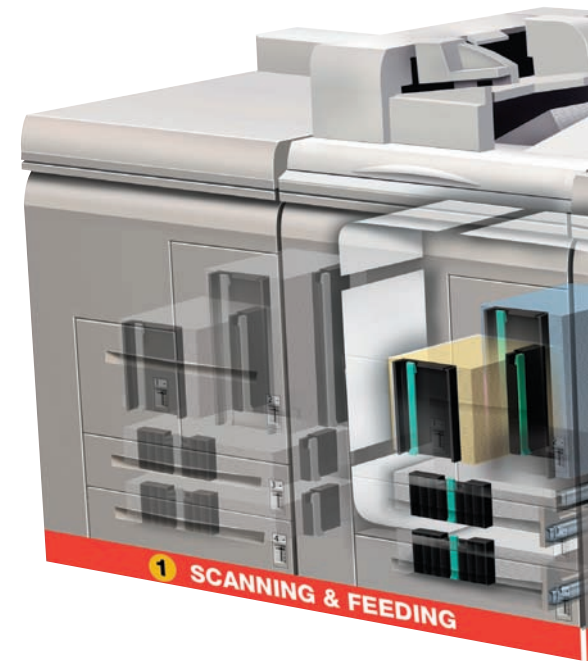
2 Imaging and Processing

The powerful Xerox FreeFlow DocuSP Controller software is integrated into the Nuvera EA Digital Production System, so it doesn't cost you space for a separate workstation. Choose the base version or add enhancements, such as multiple queues and a robust stock library, Xerox FreeFlow VI Suite, additional data stream licenses, imposition software and/or enhanced line screen capability (available in 85, 106, 125, 134 and 156 lpi).

All variations of the Nuvera EA Digital Production System feature a standard print engine. Choose from three true production speeds, of 100 ppm, 120 ppm or 144 ppm.

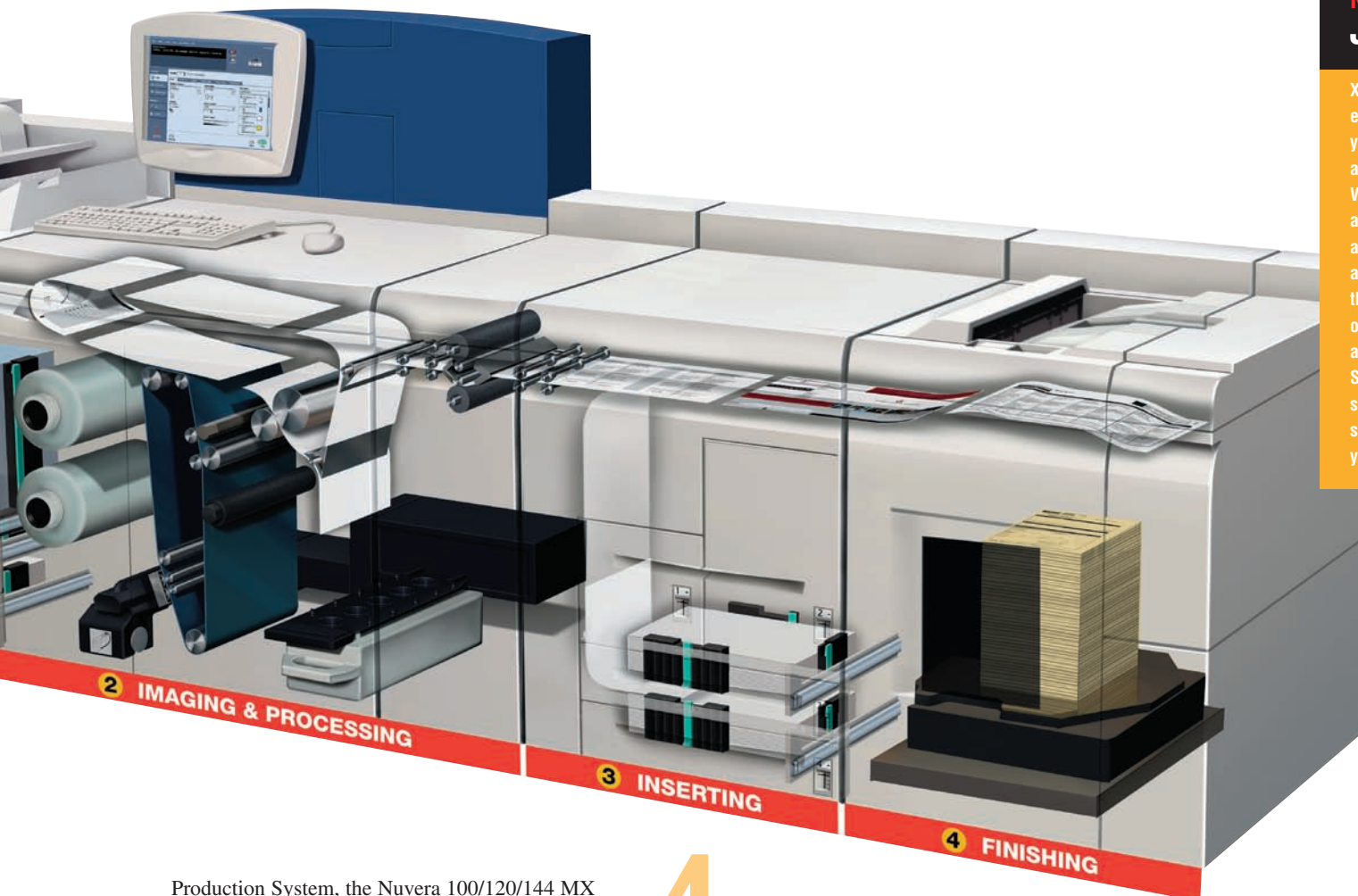
Is Secure Financial Printing a Requirement?

If printing financial applications is part of your business, we offer a MICR (Magnetic Ink Character Recognition) alternative to the Nuvera EA Digital



Need Something Else? Just Ask.

Xerox is here to provide solutions that enable you to produce the applications your business demands today as well as those you dream of for the future. We are constantly researching new and better ways to help you succeed, and have created several unique alternatives for customers. Though they were created to meet the needs of specific customers, they are now available to other customers as well. So if you need something beyond the standard and optional capabilities you see in this brochure, please talk to your Xerox representative.



Production System, the Nuvera 100/120/144 MX Digital Production System. Choose a system featuring one of three MICR print engines, fully backed by the Xerox Check Performance Guarantee. See your Xerox Sales Representative for more information.

Inserting

• **Post-print Paper Insertion Modules.** The post-print four-tray Paper Insertion Module has a 5,800-sheet capacity, while the two-tray paper Insertion Module accommodates 3,200 oversized sheets providing an overall system total of up to 12 pick points. They excel at producing unique workflow jobs that require the post insertion of color covers, inserts or specialty media.

Finishing

The Nuvera EA Digital Production System offers a wide variety of in-line finishing options, from Xerox and an array of industry-leading third-party suppliers. Available to accommodate all your needs, from mid-production to full production and from complex documents to challenging environments, these include:

• **Multifunction Finisher Professional**, a mid-production finishing alternative with capabilities such as stapling, folding and booklet making (available at 100 ppm and 120 ppm speeds).

- **The Multifunction Finisher Pro Plus** offers all the benefits of the Multifunction Finisher Professional, plus three-hole punch and 200-sheet color/cover insertion.
- **Basic Finisher Module and Basic Finisher Module Plus**, intended for production print environments, provide in-line stapling and stacking in single or dual combinations.
- **Finishing Transport Module** gives you quick and easy access to a variety of third-party finishing and stacking devices.

Shown with integrated onboard scanner, optional second toner canister system and Basic Finisher Module.

Choices That Reflect Who You Are and What You Want

All the pieces you need to create a solution custom-made to suit your business are available to you with the Xerox Nuvera EA Digital Production System. You can tailor it two ways: with hardware and with workflow options. So pick and choose, mix and match, until you arrive at the optimum solution for your business.



**Xerox FreeFlow
Scanner 665**

or



**Standard
Sheet-Feed Module with
Integrated Onboard Scanner**

+

or



**High Capacity
Sheet-Feed Module**

+



**High Capacity
Sheet-Feed Module**

+

or



**Standard
Sheet-Feed Module**

+



**Standard
Sheet-Feed Module**

+



**Xerox Nuvera EA Digital Production
System with Sheet Enhancement Module**

1

Scanning & Feeding

2

Imaging & Processing

+



**Multifunction Finisher
Professional¹**

or



**Multifunction Finisher
Pro Plus¹**

¹ The Sheet Enhancement Module is not compatible or included in configurations featuring the Multifunction Finisher Professional or the Multifunction Finisher Pro Plus.

² Available "Dual" finishing combinations (not shown) Standalone (1) Basic Finisher Module Plus and (1) Basic Finisher Module, or in combination with other in-line finishing solutions (2) Basic Finisher Modules Plus and (1) Finishing Transport Module.

+



**High Capacity Sheet-Feed
Insertion Module**

+



Basic Finisher Module²

or

+



**Standard Sheet-Feed
Insertion Module**

+



Basic Finisher Module Plus²

+



Finishing Transport Module

+

- Booklet Makers
- Staplers
- Perfect Binders
- Punchers
- Stackers
- Thermal Binders
- Spiral Binding



3

Inserting

4

Finishing

Be the Image of Productivity

If you look at the definition of productivity from an economic standpoint, it's essentially about producing more in less time. The Xerox Nuvera EA Digital Production System brings together speed, brains, muscle and support to deliver a package that will break through the boundaries to productivity every day.

Making Work Better, Faster, Easier.

Workflow is the process of managing jobs from creation through final output. We know you want a workflow that takes you through each step as quickly and efficiently as possible, while still maintaining the highest levels of quality. That's where the Xerox FreeFlow Digital Workflow Collection comes in. Integrating with the Nuvera EA Digital Production System, the Xerox FreeFlow suite of optional solutions enables you to enhance, automate and simplify your existing workflow, increasing productivity and making the most of your investment.

So, whether you want to offer your customers the ability to order print online (FreeFlow Web Services, powered by Press-sense), reduce the cost and time required to prepare jobs for print (FreeFlow Process Manager™), balance printer activity to optimize efficiency (FreeFlow Output Manager™), find a distributed solution for creating complex jobs and preparing to print (FreeFlow Makeready® and Scanner 665), or take advantage of the personalization business opportunity (FreeFlow Variable Information Suite) and so much more, FreeFlow has a workflow option for you.

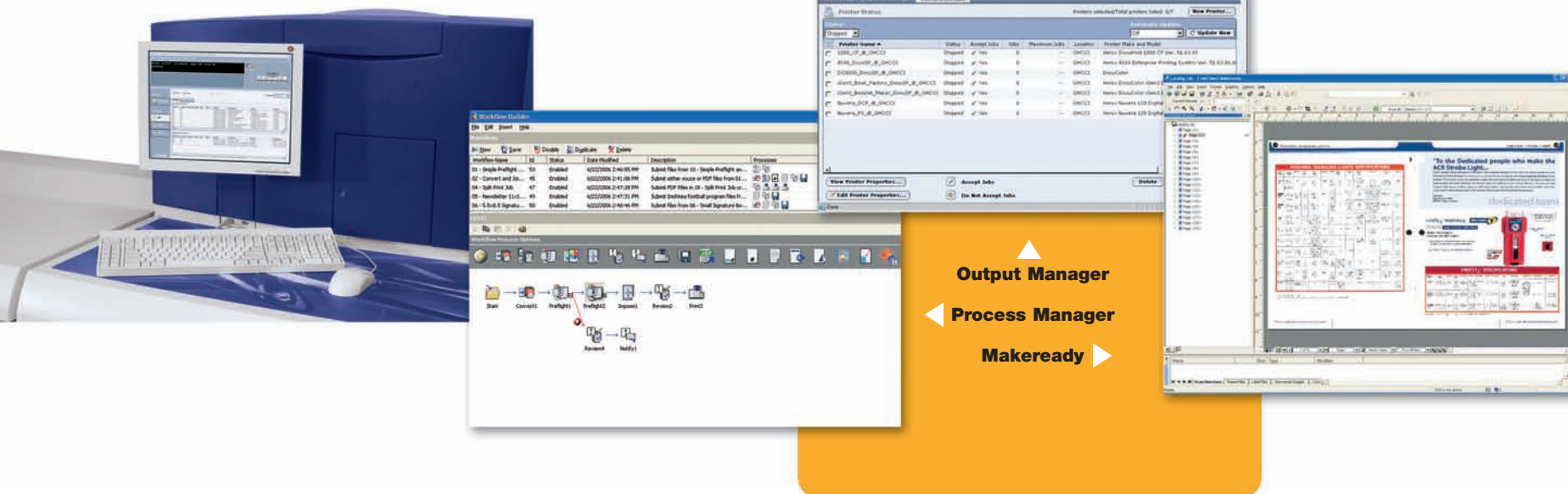
For more information, visit

www.xerox.com/freeflow



FreeFlow™

Digital Workflow Collection



Free to Be in Control.

Xerox FreeFlow DocuSP, the print server for the Nuvera EA Digital Production System, delivers unparalleled flexibility and powerful processing capabilities. It gives you a remarkable level of job control, along with a remarkable level of freedom, to do what you need to do to be competitive and profitable in today's challenging marketplace.

You'll have control over data streams, prepress functions, job queues, output quality and more—plus the freedom to work within a number of network environments to produce a broad range of business-building applications, all while using a variety of equipment.

Advantages of FreeFlow DocuSP include the ability to:

- **Receive/RIP/print jobs concurrently to efficiently produce hundreds of small jobs or transactional data jobs with thousands of customer database entries.**
- **Print and re-print on-demand with simple controls to preview, edit, impose, proof, interrupt, reprogram and forward jobs.**
- **Advanced security controls allow individual or group settings.**

- **Submit jobs from just about anywhere, including desktop/commercial publishing workflows. Submit data from mainframe systems, and client/server architectures, XML/database/ASCII input or simply from DVDs, CDs and even portable USB devices.**
- **Submit print-ready jobs into pre-set Hot Folders for easy, automatic printing.**
- **Automate job ticketing and customize job workflows through up to 250 programmable queues with minimal operator intervention.**
- **Use stock library to promote efficient use of media.**
- **Save on training costs and increase uptime—familiar interface and workflow lends itself to “train once” paradigm.**

And while FreeFlow DocuSP enables both the high imaging quality and speeds required for publishing environments, it also readily accommodates the multiple data streams required for transactional applications. FreeFlow DocuSP simultaneously handles an impressive variety of common data streams including Adobe PostScript, PCL, PDF, TIFF, ASCII, LCDS and IPDS and variable data format such as Xerox VIPP and PPML.

Staying Productive.

Xerox offers these options to ensure you enjoy maximum uptime from your Nuvera EA Digital Production System.

Xerox Productivity Plus

The Xerox Productivity Plus Integrated Maintenance Program gives your operators the power to perform routine preventive maintenance and tune-ups in your production print environment. It puts you in control so you can maximize your up-and-running time.

Xerox prInteractSM Remote Service Offerings

Xerox
prInteract
Remote Service Offerings

Remote service is available through a secure, online connection between Xerox engineering staff and your Nuvera EA Digital Production System. Using this connection, we can quickly respond to your service needs, enabling us to:

- **Easily access equipment data to provide real-time recommendations and help optimize overall performance.**
- **Automatically generate up-to-the-day accurate meter reads with MeterAssistantTM.**

Competitive and
PROFITABLE

Put a Polished Finish on Your Image

The Xerox Nuvera EA Digital Production System supports an array of in-line and off-line professional finishing options, both from Xerox and from respected third-party suppliers. They are available to accommodate and complement every aspect of your jobs, from complex documents to unique customer requirements and challenging environments. With the Nuvera EA Digital Production System's offset quality and superb sheet flatness, you can be sure to put the right finishing touch on your projects.

Maximum Flexibility and Impact in a Small Package.

For Mid-production Environments.

The Multifunction Finisher Professional, available at 100 and 120 ppm, is ideal for accommodating mid-production volumes. It offers stacking (2,000 sheets), stapling, booklet-making, and c-fold, z-fold and bi-fold.

The Multifunction Finisher Pro Plus offers all the benefits of the Multifunction Finisher Professional and more, including the following:

- An insertion tray which accommodates
 - 200 sheets (20 lb. bond, 75 gsm)
 - Minimum paper size, 7" x 10"/B5
 - Maximum paper size, Ledger/A3
 - Uncoated, 38 lb. book to 80 lb. cover (56-220 gsm)

• Hole punch capabilities

- 2/3 (standard) or 2/4 (optional) Hole Punch CRU for USA
- Minimum paper size, 7" x 10"/B5
- Maximum paper size, 12" x 18"/SRA3
- Uncoated, 38 lb. book to 110 lb. index (56-200 gsm)

These key features enable this finisher to provide extremely flexible finishing for high-quality, high-impact documents, right at your point of need. You can produce anything from neatly stapled and stacked output to envelope- or postage-ready tri- and bi-folds, to binder-ready punched pages and impressive large or small booklets, all in a single, small finishing device. The Multifunction Finisher Pro Plus also enables you to significantly boost document value with color covers and inserts—at a fraction of the cost of a full-color print job—via post-processing insertion.

Note: The Multifunction Finisher Professional and Multifunction Finisher Pro Plus accept uncoated stock only. The Sheet Enhancement Module is not compatible with or included in configurations featuring the Multifunction Finisher Professional or the Multifunction Finisher Pro Plus.

OFFSET QUALITY



**Basic Finisher Module Plus and
Basic Finisher Module**



**Xerox DS500
High Capacity Stacker**



**Multifunction
Finisher Pro Plus**



GBC Fusion Punch II with Offset Stacker

The Basics.

For Production Print Environments.

The Basic Finisher Module and Basic Finisher Module Plus allow you to staple and stack up to 3,000 sheets with single or dual staple positions. Additionally, the Basic Finisher Module Plus gives you the go-ahead to expand your in-line capabilities. Designed for production print environments, this vigorous module adds capacity, consistency and productivity for the long run.

The Basic Finisher Module Plus

- Features a convenient side exit that lets you integrate basic in-line finishing with other finishing equipment.
- Works in harmony with the Basic Finisher Module to enable standalone dual finishers that stack up to 6,000 sheets. Delivers unload-while-run finishing capability, ensuring greater throughput without interruption.

- Can be used in tandem, as described, enabling you to integrate two Basic Finisher Modules Plus with other in-line finishing alternatives.

Both the Basic Finisher Module and Basic Finisher Module Plus have increased capability to handle the Nuvera EA Digital Production System's expanded paper weights and boost your productivity.

Your Link to More Finishing Options.

The Nuvera EA Digital Production System's Finishing Transport Module is your link to more finishing choices, giving you easy access to an expansive range of third-party finishing and stacking devices from recognized industry leaders such as C.P. Bourg, Plockmatic, GBC and others. Document Finishing Architecture (DFA) enables you to add just about any finishing option you need, whether you are working in a publishing or transactional printing environment.



From booklet makers and perfect binders to inserters, stackers, stitchers, spiral binders and more, Xerox partners with the makers of today's best finishing devices and equipment. So take your pick, the road is open to you.



Xerox SquareFold® Booklet Maker



C.P. Bourg Manual and Book Factory



Xerox DB120-D Document Binder



C.P. Bourg BDFx Booklet Maker with Square Edge

XEROX®

Technology | Document Management | Consulting Services

For more information on Xerox Nuvera® EA Digital Production System, call toll-free **1-800-ASK-XEROX** or visit us on the web at www.xerox.com

Your Image, Your Way



The Xerox Nuvera EA Digital Production System

drives the finest image quality while offering you the flexibility to create a system that meets your needs today—and that can conform and grow to meet your needs tomorrow. It's a powerful ally as you strive to grow your business and your profits while staying miles ahead of the competition. Talk to your Xerox representative today, and put your image in the lead.

